

20S2P NiMH Mini Battery Pack

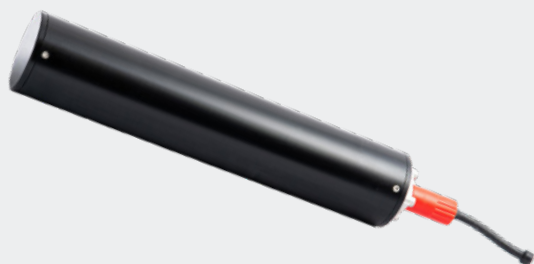
UNDERWATER POWER SOURCE

The EvoLogics 20S2P NiMH rechargeable underwater battery pack is an efficient power source for mid- and long-term subsea deployments of S2C devices. The "mini" form factor caters to size- and weight-sensitive applications.

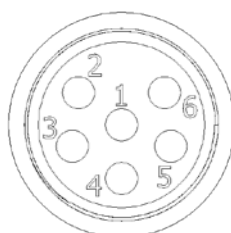
The battery is optimized for the pulsing load of underwater acoustic modems. NiMH cells ensure high-performance and long operating life. These batteries may be shipped by air transport as they are considered not restricted once the shipper complies with IATA provisions.

The **applications** include:

- Subsea observatories
- Autonomous underwater equipment
- Underwater sensor networks



GENERAL	HOUSING MATERIAL	Delrin, Stainless Steel
	DEPTH RATING	200 m (Delrin), 2000 m (Stainless Steel)
	CONNECTOR TYPE	Subconn 6-pin connector FCR1506F
BATTERY	CELL TYPE	AA low self-discharge (LSD) secondary (rechargeable) cell
	CELL CHEMISTRY	NiMH
	BATTERY CONFIGURATION	20S2P
	BATTERY CAPACITY	5 Ah / 120 Wh
VOLTAGE	NOMINAL VOLTAGE	24 V
	MAXIMUM VOLTAGE	30 V
	END-OF-DISCHARGE VOLTAGE (EODL)	20 V
DIMENSIONS*	Delrin housing	L 316 x Ø 63 mm
WEIGHT*	Delrin, dry/wet	1920 /940 g
OPERATING TEMPERATURE RANGE		-10°C to +45°C
STORAGE TEMPERATURE RANGE		-15°C to +40°C



FCR1506F
face view

PIN	DESCRIPTION
1	BAT+
2	BAT+
3	CHARGE
4	BAT-
5	BAT-
6	NC

* Dimensions and weight of Delrin housing configuration. Other builds are lighter, dimensions vary.